

# Winter activities

WINTER  
2024/2025

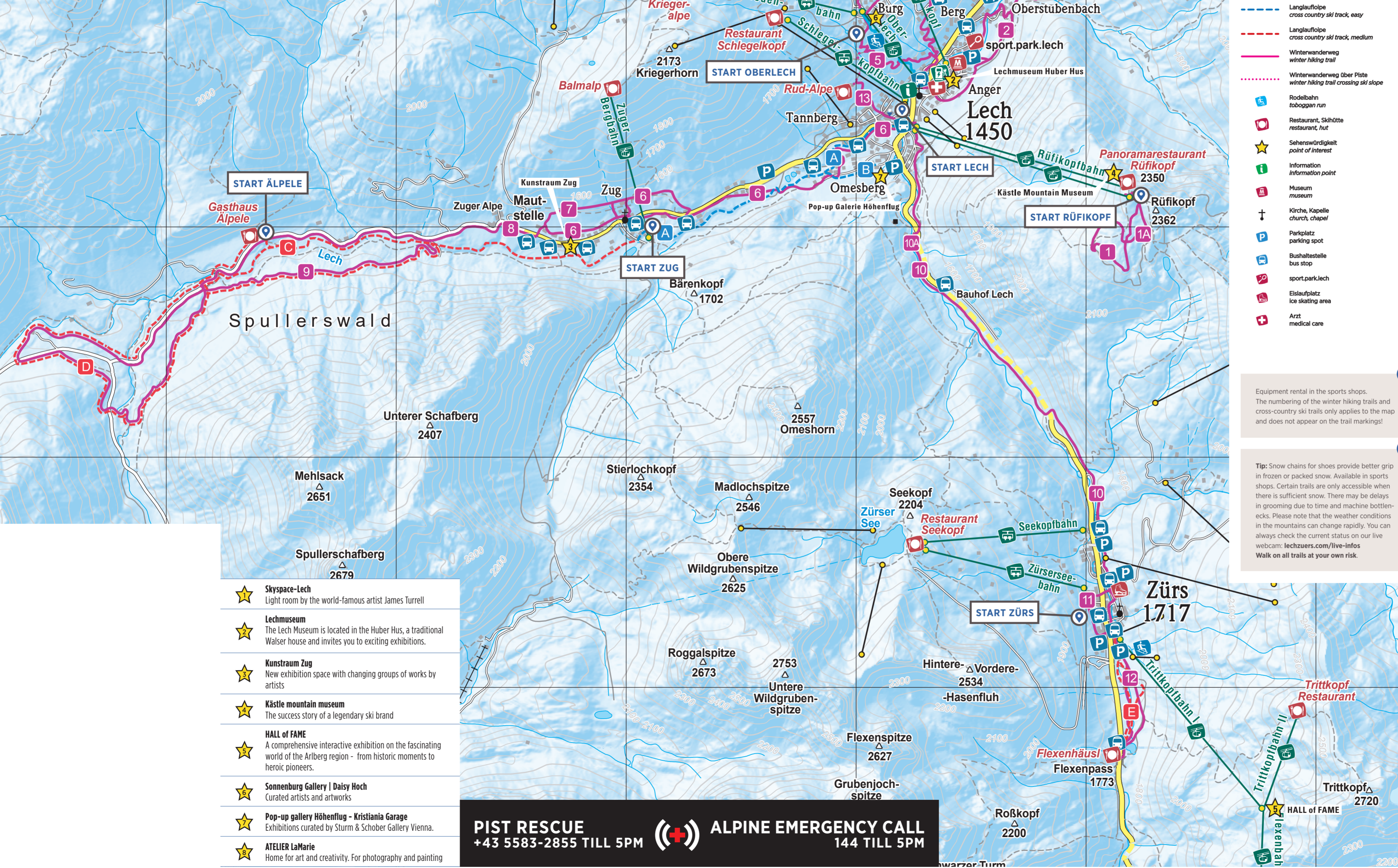
Winter hiking trails  
Cross-country skiing  
Culture programme

*Lech*  
*Züers*  ARLBERG

[LECHZUERS.COM](https://lechzuers.com)



LIFTS AND CABLE CARS FOR WINTER HIKING	
	Zugerberg
	Rüfikopf
	Schlegelkopf
	Schlosskopf
	Bergbahn Oberlech
	Petersboden
	Weibermahd
	Seekopf
	Trittkopf I + II
	Zürsersee
	Flexenbahn



- Skyspace-Lech**  
Light room by the world-famous artist James Turrell
- Lechmuseum**  
The Lech Museum is located in the Huber Hus, a traditional Walser house and invites you to exciting exhibitions.
- Kunstraum Zug**  
New exhibition space with changing groups of works by artists
- Kästel mountain museum**  
The success story of a legendary ski brand
- HALL of FAME**  
A comprehensive interactive exhibition on the fascinating world of the Arlberg region - from historic moments to heroic pioneers.
- Sonnenburg Gallery | Daisy Hoch**  
Curated artists and artworks
- Pop-up gallery Höhenflug - Kristiania Garage**  
Exhibitions curated by Sturm & Schöber Gallery Vienna.
- ATELIER LaMarie**  
Home for art and creativity. For photography and painting

**PIST RESCUE**  
+43 5583-2855 TILL 5PM

**ALPINE EMERGENCY CALL**  
144 TILL 5PM

## Legend

- Hauptstraße main road
- Nebenstraße minor road
- Kabinenbahn für Fußgängerinnen cable car for winter hikers
- Seilbahn für Fußgängerinnen cable car for winter hikers
- Sessellift für Fußgängerinnen chair lift for winter hikers
- Skilift ski lift
- Langlaufloipe cross country ski track, easy
- Langlaufloipe cross country ski track, medium
- Winterwanderweg winter hiking trail
- Winterwanderweg über Piste winter hiking trail crossing ski slope
- Rodelbahn toboggan run
- Restaurant, Skihütte restaurant, hut
- Sehenswürdigkeit point of interest
- Information information point
- Museum museum
- Kirche, Kapelle church, chapel
- Parkplatz parking spot
- Bushaltestelle bus stop
- sport.park.lech
- Eislaufplatz ice skating area
- Arzt medical care

Equipment rental in the sports shops. The numbering of the winter hiking trails and cross-country ski trails only applies to the map and does not appear on the trail markings!

**Tip:** Snow chains for shoes provide better grip in frozen or packed snow. Available in sports shops. Certain trails are only accessible when there is sufficient snow. There may be delays in grooming due to time and machine bottlenecks. Please note that the weather conditions in the mountains can change rapidly. You can always check the current status on our live webcam: [lechzuers.com/live-infos](http://lechzuers.com/live-infos) Walk on all trails at your own risk.

## Winter hiking

### TRAILS

<b>1   SCHNEEFLOCKEN-PANORAMA-WEG RÜFIKOPF - LARGE ROUND</b>	Difficulty: <span style="background-color: #0070C0; color: white;">easy</span>	Distance: 2,7 km
Duration: 1:30 h	Altitude: 200 m	
<b>1A   SCHNEEFLOCKEN-PANORAMA-WEG RÜFIKOPF - SMALL ROUND</b>	Difficulty: <span style="background-color: #0070C0; color: white;">easy</span>	Distance: 1,4 km
Duration: 0:45 h	Altitude: 100 m	
<b>2   LECH - STUBENBACH - LECH</b>	Difficulty: <span style="background-color: #0070C0; color: white;">easy</span>	Distance: 3 km
Duration: 0:55 h	Altitude: 115 m	
<b>2A   STUBENBACH-ACHTER</b>	Difficulty: <span style="background-color: #0070C0; color: white;">easy</span>	Distance: 1,1 km
Duration: 0:20 h	Altitude: 55 m	
<b>2B   STUBENBACH AHORNWEG</b>	Difficulty: <span style="background-color: #0070C0; color: white;">easy</span>	Distance: 1,2 km
Duration: 0:20 h	Altitude: 60 m	
<b>3   OBERLECH - TANNEGG - KRIEGERALPE</b>	Difficulty: <span style="background-color: #800000; color: white;">hard</span>	Distance: 3,4 km
Duration: 1:25 h	Altitude: 363 m	
<b>3A   OBERLECH - SKYSPACE-LECH</b>	Difficulty: <span style="background-color: #800000; color: white;">middle</span>	Distance: 1,3 km
Duration: 0:30 h	Altitude: 131 m	
<b>4   SCHLÖSLE - TANNEGG - GAISBÜHEL - SCHLÖSLE</b>	Difficulty: <span style="background-color: #800000; color: white;">middle</span>	Distance: 5,7 km
Duration: 1:45 h	Altitude: 237 m	
<b>4A   SCHLÖSLE - SKYSPACE-LECH</b>	Difficulty: <span style="background-color: #0070C0; color: white;">easy</span>	Distance: 0,7 km
Duration: 0:20 h	Altitude: 50 m	
<b>4B   SKYSPACE-LECH - GAISBÜHEL - SKYSPACE-LECH</b>	Difficulty: <span style="background-color: #0070C0; color: white;">easy</span>	Distance: 1 km
Duration: 0:40 h	Altitude: 100 m	
<b>5   OBERLECH RUNDE</b>	Difficulty: <span style="background-color: #800000; color: white;">middle</span>	Distance: 3,3 km
Duration: 1:05 h	Altitude: 222 m	
<b>6   WINTER FOREST TOUR</b>	Difficulty: <span style="background-color: #800000; color: white;">middle</span>	Distance: 6,9 km
Duration: 2:00 h	Altitude: 142 m	
<b>7   ZUGER RUNDE</b>	Difficulty: <span style="background-color: #0070C0; color: white;">easy</span>	Distance: 3,2 km
Duration: 1:00 h	Altitude: 92 m	
<b>8   ZUG - ÄLPELE</b>	Difficulty: <span style="background-color: #0070C0; color: white;">easy</span>	Distance: 3,9 km
Duration: 1:20 h	Altitude: 101 m	
<b>9   ÄLPELE - SPULLERWALD - ZUG</b>	Difficulty: <span style="background-color: #800000; color: white;">middle</span>	Distance: 10,3 km
Duration: 2:50 h	Altitude: 151 m	
<b>10   LECH - ZÜRS</b>	Difficulty: <span style="background-color: #800000; color: white;">middle</span>	Distance: 5,3 km
Duration: 1:25 h	Altitude: 279 m	
<b>10A   LECH - ZÜRS SEEKOPFBahn</b>	Difficulty: <span style="background-color: #800000; color: white;">middle</span>	Distance: 5,2 km
Duration: 1:40 h	Altitude: 250 m	
<b>11   ZÜRSEER RUNDE</b>	Difficulty: <span style="background-color: #0070C0; color: white;">easy</span>	Distance: 1,1 km
Duration: 0:45 h	Altitude: 24 m	
<b>12   ZÜRS - FLEXENPASS - ZÜRS</b>	Difficulty: <span style="background-color: #0070C0; color: white;">easy</span>	Distance: 2,6 km
Duration: 0:40 h	Altitude: 184 m	
<b>13   LECH - RUD-ALPE</b>	Difficulty: <span style="background-color: #0070C0; color: white;">easy</span>	Distance: 0,5 km
Duration: 0:30 h	Altitude: 60 m	
<b>14   ZÜRS - FLEXENPASS - ZÜRS</b>	Difficulty: <span style="background-color: #800000; color: white;">middle</span>	Distance: 2,6 km
Duration: 0:40 h	Altitude: 95 m	

## Cross-country skiing

### CLASSIC 6 SKATING Lech

<b>A   LECH - ZUG</b>	Difficulty: <span style="background-color: #0070C0; color: white;">easy</span>	Distance: 2,8 km
Duration: 0:40 h	Altitude: 66 m	
<b>B   OMESBERG - ZUG</b>	Difficulty: <span style="background-color: #0070C0; color: white;">easy</span>	Distance: 2,4 km
Duration: 0:50 h	Altitude: 44 m	
<b>C   ZUG - ÄLPELE - SPULLERWALD - ZUG</b>	Difficulty: <span style="background-color: #800000; color: white;">middle</span>	Distance: 6,6 km
Duration: 1:15 h	Altitude: 163 m	
<b>D   ZUG - ÄLPELE - TANNLÄGERALPE - ÄLPELE - ZUG</b>	Difficulty: <span style="background-color: #800000; color: white;">middle</span>	Distance: 10,5 km
Duration: 2:50 h	Altitude: 334 m	

<b>E   ZÜRS - FLEXENPASS - ZÜRS</b>	Difficulty: <span style="background-color: #800000; color: white;">middle</span>	Distance: 2,6 km
Duration: 0:40 h	Altitude: 95 m	

Responsible for the content: Lech Zürs Tourismus GmbH / Konzeption & Design: M&SST Werbeagentur GmbH / Map & Print: Albersbach Buch GmbH - geoworking / Photos: Lech Zürs Tourismus GmbH, 30 Arlberg West GmbH, Christoph Schöb photography GmbH, Alex Kaiser, Daniel Zangerl, Detmar Marnach, Frederick Sains, Shutterstock.com (Gerald Dornow) / Typsetting and printing errors reserved.





### TOBOGGAN RUN

**Toboggan Oberlech**  
Tremendous fun for both young and old on the floodlit, snow-covered toboggan run from Oberlech to Lech. The spectacular route also guarantees to be an unforgettable adventure for the whole family. Bobs are available for hire at the Oberlech cable-car terminal and in sports shops. Please bring an ID and deposit with you.

TOBOGGAN RUN	
<b>Length</b>	1,2 km
<b>Contact</b>	Phone: +43 5583 2350-0
<b>Opening hours</b>	daily from 09.00 am – 09.00 pm

**Toboggan Zürs**  
The small trochanter in Zürs offers a lot of fun and action in the snow for our little guests. You find the small trochanter above the kids land in Zürs. Open during the operating hours of the Kinderland Zürs ([ski-zuers.at/kinderland](http://ski-zuers.at/kinderland)).



### TANDEM PARAGLIDING

Leave the earth behind and feel liberated as soon as you take off with no constraints and no engine noise, floating feely, only joined to the wing by a couple of cords, feeling the strength of the air currents amid our beautiful countryside. Forget everyday life and enjoy being totally on your own. This feeling is never stronger than when you are flying and you can experience it here by trying tandem paragliding. As well as sensational paragliding flights we also offer spectacular thermal flights and fascinating panoramic flights. Also suitable for groups. See you in the sky!

INFORMATION	
<b>Paragliding start point</b>	Kriegerhorn
<b>Landing</b>	next to Flühenlift
<b>Total duration</b>	1 hour 30 minutes
<b>Flight time</b>	approx. 15 minutes
<b>Maximum flying height</b>	2.300–2.300 metres
<b>Prices &amp; booking</b>	<a href="http://www.parapowder.at/en">www.parapowder.at/en</a>

### CROSS-COUNTRY SKIING

More than 27 kilometres of groomed, free-of-charge cross-country ski trails are at your disposal as a training ground in the Arlberg region. Flat terrain and gentle climbs, crisp mountain sprints and short descents - beyond the Ski Arlberg ski resort, there is a varied network of cross-country ski trails just waiting to be discovered. The Zugertal in particular enchants with its unspoilt winter landscape and majestic mountains. On the idyllic cross-country ski trails, you can enjoy the clear mountain air and the tranquil beauty of nature. The trail report provides you with reliable daily information about which trails are open and which are closed. The trail planner also provides an overview of the entire trail network to help you prepare and plan your activities precisely.

CROSS COUNTRY SKI INSTRUCTION ON REQUEST	
<b>Skischule Lech</b>	Phone: +43 5583 2355, <a href="http://www.skilech.info">www.skilech.info</a>
<b>Skischule Zürs</b>	Phone: +43 5583 2611, <a href="http://www.skischule-zuers.at">www.skischule-zuers.at</a>
<b>Arlberg Alpin Skischule Mohnenfluh</b>	Phone: +43 664 3203506 <a href="mailto:info@arlbergalpin.at">info@arlbergalpin.at</a>
<b>Schne sportschule Omeshorn</b>	Alpincenter Lech, Phone: +43 5583 39880 <a href="http://www.alpincenter-lech.at/Schne sportschule">www.alpincenter-lech.at/Schne sportschule</a>
<b>Arlberg Free Moving</b>	Phone: +43 664 3562650 <a href="http://www.arlberg-free-moving.com">www.arlberg-free-moving.com</a>

More Information:  
<http://lechzuers.com/en/winter/winter-sports/cross-country-skiing>



### ICE SKATING - CURLING

**Natural ice rink Zürs** is a particular highlight. You can turn pirouettes and enjoy the view over the surrounding alpine scenery. Here you also have the opportunity to play curling.

INFORMATION	
<b>Opening hours</b>	The current opening hours of the season can be found on our website
<b>Curling</b>	Reservation required
<b>Reservations</b>	Phone: +43 5583 2104

More information:  
[lechzuers.com/en/winter/winter-sports/other-winter-activities/ice-skating](http://lechzuers.com/en/winter/winter-sports/other-winter-activities/ice-skating)

### SNOWSHOEING

Experience the unique winter landscape around Lech Zürs am Arlberg in the fresh, clear winter air. One of the great advantages of snowshoeing compared to other winter sports is that anyone with average physical condition can participate without needing any additional technical skills. You can rent the right pair of snowshoes including poles in one of the local sports stores. The large tread surface of the snowshoes prevents you from sinking too far in the powder snow and thus enables you to cover longer distances.

GUIDED SNOWSHOEING ON REQUEST & INFORMATION & REGISTRATION	
<b>Arlberg Alpin Skischule Mohnenfluh</b>	Phone: +43 664 3203506 <a href="mailto:info@arlbergalpin.at">info@arlbergalpin.at</a> every Tuesday & Thursday
<b>Arlberg Free Moving</b>	Phone: +43 664 3562650 <a href="http://www.arlberg-free-moving.com">www.arlberg-free-moving.com</a>
<b>Four Seasons Guiding</b>	Anton Grisseemann Phone: +43 664 4000827
<b>Schne sportschule Omeshorn</b>	Phone: +43 5583 39880 <a href="mailto:info@alpincenter-lech.at">info@alpincenter-lech.at</a>
<b>Skischule Oberlech</b>	Phone: +43 5583 2007 <a href="http://www.skischule-oberlech.at">www.skischule-oberlech.at</a>
<b>Clothing:</b>	Winter outfit and winter shoes

Further information on the subject Snowshoeing:  
[lechzuers.com/en/winter/winter-sports/other-winter-activities/snowshoeing](http://lechzuers.com/en/winter/winter-sports/other-winter-activities/snowshoeing)



### HORSE-DRAWN SLEIGH RIDES

Whether by day or at night – a ride on a horse-drawn sleigh is always a highlight of your winter holiday. Location at the covered wooden bridge in Lech (opposite Hotel Post).

REGISTRATION	
<b>Haus Angelika</b>	Phone: +43 5583 4140 or +43 664 3443730 <a href="mailto:haus.angelika.lech@aan.at">haus.angelika.lech@aan.at</a>

### WINTER WALKING

An over 50-km winter hiking trail network in Lech Zürs am Arlberg invites hikers to explore the snow without snowshoes. The only things you need to bring are sturdy shoes and comfortable winter clothing. Small paths or groomed winter hiking trails lead over steep mountain slopes, through snowy forests, or along the partially frozen Lech river.

Further information and overview of the winter hiking trails:  
[lechzuers.com/en/winter/winter-sports/winterhiking](http://lechzuers.com/en/winter/winter-sports/winterhiking)

### SUN SUBSCRIPTION

For winter guests without ski or snowboard the sun subscription is the choice to explore the magnificent mountains of Ski Arlberg. The subscription includes the mountain and valley ride and is valid for many cable car and lift facilities. Tickets available at all ski ticket offices. Valid for the following lifts:

**Lech/Oberlech/Zürs:**  
Zugerberg, Rüfikopf, Schlegelkopf, Schlosskopf, Bergbahn Oberlech until 6.00 pm, Petersboden, Weibermahd, Seckkopf, Trittkopf I and II, Zürsersee and Flexenbahn

**St. Anton/St. Christoph/Stuben:**  
Galzig, Gampen, Nassererin, Valluga I and II, Kapall, Rendl, St. Christophbahn and Albonbahn



### SNOWFLAKE-PANORAMA-TRAIL AT RÜFIKOPF

Snow is simply miraculous: billions of snow crystals merge to form flakes that float down gently like leaves and cover everything in a bright white blanket. The newly created winter hiking trail starts directly at the mountain station of the Rüfikopfbahn cable car and stretches across the sunny plateau on the Rüfikopf. At the various stations along the circular trail the circular trail with interesting & impressive information about the fascinating element 'snow'. In addition, the winter hiking trail presents personalities from the Arlberg, who transform adverse conditions into highly emotional winter experiences.

### MUSEUM

**Lechmuseum**  
The Huber-Hus, a traditional Walsert house from the year 1590, is located near the Schlosskopf parking lot. The current special exhibition takes place in two locations together with the Women's Museum Hittisau: Sparkling clean! About cleaning - inside, outside, everywhere.

INFORMATION	
<b>Opening hours</b>	Thursday to Sunday from 03.00 - 06.00 pm
<b>Special guided tour</b>	on demand
<b>Contact</b>	Phone: +43 5583 2213-240

More information at:  
[lechzuers.com/en/culture-and-lifestyle/culture/museums](http://lechzuers.com/en/culture-and-lifestyle/culture/museums)



**Kästle Mountain Museum**  
The success story and innovations of a legendary Austrian ski brand can be experienced in the Kästle Mountain Museum.

INFORMATION	
<b>Location</b>	Top station of Rüfikopf
<b>Entrance</b>	free, during operation hours of the Rüfikopfbahn



**HALL of FAME**  
An interactive exhibition about the fascinating world of the Arlberg - from historic moments to heroic pioneers - awaits you in the HALL of FAME. A highlight of the HALL of FAME is the HUNT of FAME, a ski chase with the ski stars of the Arlberg.

INFORMATION	
<b>Location</b>	Trittkopfbahn I/Flexenbahn mountain station
<b>Entrance</b>	free, during the operating hours of the Trittkopfbahn I/Flexenbahn

### SKYSPACE-LECH

Discover the light art of the world-famous artist James Turrell. In the light room in Oberlech you can experience the meeting of heaven and earth in the high alpine landscape.

INFORMATION	
<b>Location</b>	Oberlech, Tannegg
<b>Opening Hours</b>	01.12. - 19.04. daily from 12.00 - 08.00 pm
<b>Guided tours</b>	Every Tuesday in English language, every Thursday in German language, always at sunset times. The exact times can be found at: <a href="http://www.skyspacelech.com">www.skyspacelech.com</a> Price: € 15,00 per person Private tours for max. 30 people are possible by arrangement. Price: € 450,00
<b>Information and registration</b>	Lech Zürs Tourism Phone: +43 5583 2161-0 E-Mail: <a href="mailto:skyspace@lechzuers.com">skyspace@lechzuers.com</a> <a href="http://www.skyspacelech.com">www.skyspacelech.com</a> or <a href="http://www.lechzuers.com/skyspace-lech">www.lechzuers.com/skyspace-lech</a>

Information & bookings:  
[lechzuers.com/en/culture-and-lifestyle/culture/skyspace-lech/guided-tours](http://lechzuers.com/en/culture-and-lifestyle/culture/skyspace-lech/guided-tours)



### ART AND CULTURE

Mountain culture is a prime example of broadening cultural horizons in Lech Zürs. Get an overview of the current exhibitions, pop-ups and galleries.

Culture in Lech Zürs:  
[lechzuers.com/en/culture-and-lifestyle/culture](http://lechzuers.com/en/culture-and-lifestyle/culture)

### LIBRARY

The new village reception in the Dorfhus is now also home to the Lech community library. There are more than 4,000 books and around 150 Tonic audio figures to choose from. A visit to the village reception is worthwhile, as all library media can be used free of charge and without registration.

INFORMATION	
<b>Opening hours</b>	You can find them at <a href="http://www.gemeinde.lech.at">www.gemeinde.lech.at</a>
<b>Contact</b>	Phone: +43 5583 2213 0

### WINTERTAINMENT

A colourful and diverse winter programme awaits winter sports enthusiasts in Lech Zürs am Arlberg. Sporty, cultural, or culinary – there's something for everyone!

Current programme at:  
[skiarlberg.at/en/Lech-Oberlech-Zuers/Wintertainment](http://skiarlberg.at/en/Lech-Oberlech-Zuers/Wintertainment)



### MORE MOVEMENT, MORE FUN.

The leisure center of Lech – The multifunctional sport.park.lech offers you a lot of possibilities which are all about movement. A fitness center on 500 sq with a cardio, strength and free weight training area as well as bowling, sauna, tennis, ball sports and all kinds of enjoyment in the indoor café.

INFORMATION	
<b>Opening hours</b>	Sunday to Friday 10:00 am – 11:00 pm Saturday 03:00 – 11:00 pm
<b>Contact</b>	Phone: +43 5583 41850 <a href="mailto:office@sport-park-lech.at">office@sport-park-lech.at</a> <a href="http://www.sport-park-lech.at">www.sport-park-lech.at</a>

More information:  
[sport-park-lech.at](http://sport-park-lech.at)



### SQUASH

For squash enthusiasts the Hotel Enzian in Zürs offers an up-to-date squash court. This is open to everyone at all skill levels, from beginners to professionals.

INFORMATION	
<b>Price</b>	1/2 hours € 10,00 Block of 10 € 80,00
<b>Opening hours</b>	on request
<b>Contact</b>	Phone: +43 5583 2242

### TRANSPORT

**Ski bus/local bus**  
The local bus service in Lech offers an attractive, well developed route with short, regular intervals between busses. The fare for the blue village bus is included in the ski pass or in the overnight stay until 07.30 pm.

**Night bus (with costs)**  
James is your chauffeur during the night. He connects the districts of Oberlech, Stubenbach, Zug and Zürs comfortably.

**Public bus (with costs)**  
Bus line 760: St. Christoph am Arlberg, St. Anton am Arlberg  
Bus line 750: Stuben am Arlberg, Langen am Arlberg  
Train station

INFORMATION	
<b>Local bus Lech</b>	Phone: +43 5583 4100
<b>Postbus Lech</b>	Phone: +43 5583 2150
<b>Postbus Landeck</b>	Phone: +43 5442 64422

More information:  
[lechzuers.com/en/local-bus](http://lechzuers.com/en/local-bus)



TAXI	
<b>„Der Lecher“</b>	Phone: +43 5583 2501
<b>„Taxi Zürs“</b>	Phone: +43 5583 3110
<b>„Lech Taxi“</b>	Phone: +43 650 4400752

- Deficiencies on the winter hiking trails or cross-country ski trails can be reported at [info@lechzuers.com](mailto:info@lechzuers.com)
- For the preservation of our beautiful nature please always take your garbage with you!
- We urge dog owners to make use of the Robidog bags provided for this purpose.

**SUBSCRIBE TO OUR NEWSLETTER**  
Stay up to date

Monthly News & Event Highlights  
Customized Information  
Special Offers

Scan QR-Code and subscribe to our newsletter:  
[LECHZUERS.COM/EN/NEWSLETTER](http://LECHZUERS.COM/EN/NEWSLETTER)





**Lech  
Zürs**  **ARLBERG**

LECH ZÜRS TOURISMUS GMBH

Dorf 164 · 6764 Lech am Arlberg

T. +43 5583 2161-0

info@lechzuers.com



Print product with financial  
**climate contribution**

ClimatePartner.com/2474-2410-1001

Austria

**VOR  
ARL  
BERG**



**LECHZUERS.COM**